

Underground heating system leak detection using Aerial IR Thermography and advanced data analysis neural algorithms

EPFL Lausanne - 19th May, 2025

Dipl. Ing. Luca Del Nero
DarkWave Thermo Schweiz GmbH

Official Partner



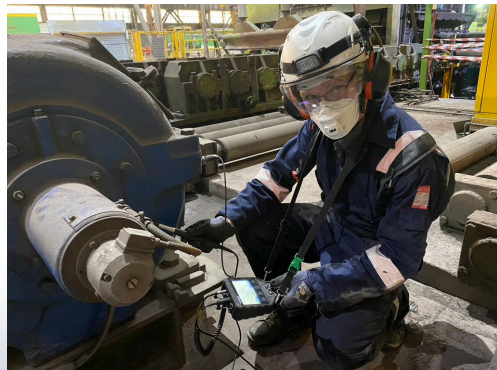
SEEING IS
BELIEVING





DarkWave Thermo[®] diagnostic & reliability excellence

EPFL



Official Partner



SEEING IS
BELIEVING



What is an underground heating system?

Official Partner



SEEING IS
BELIEVING

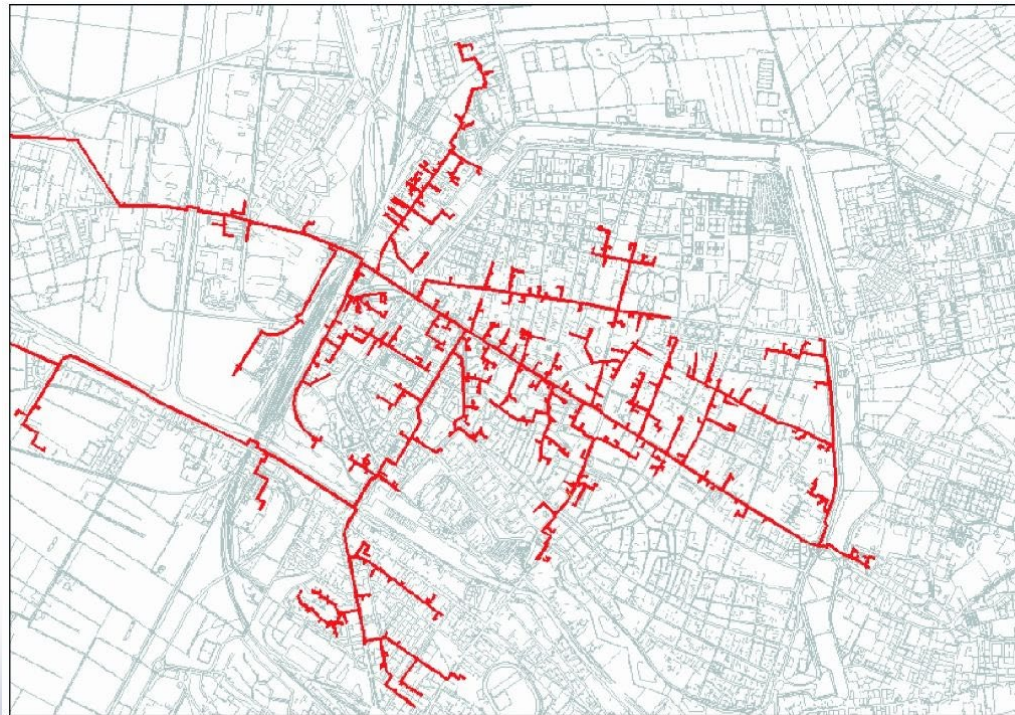




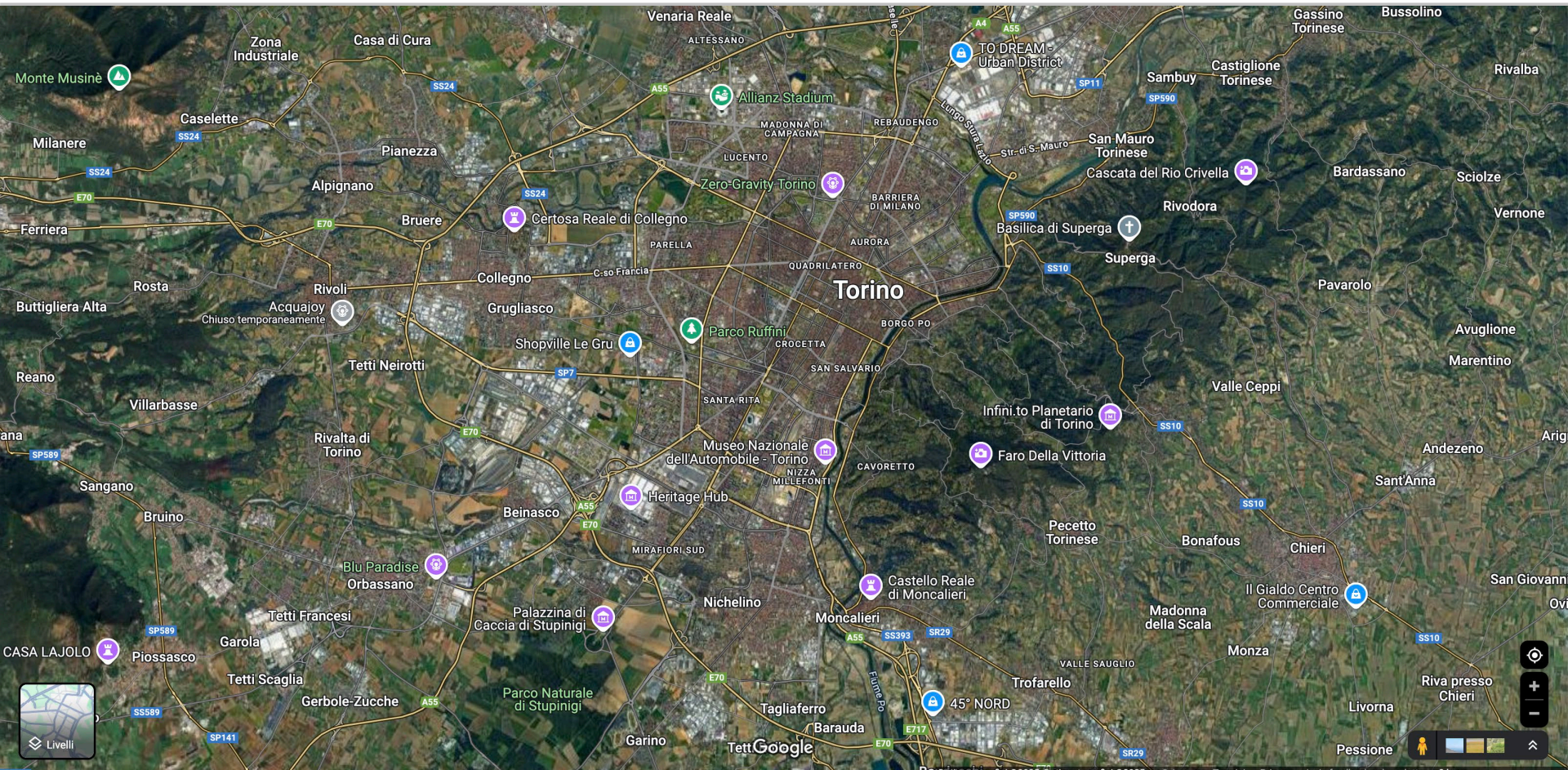
Challenge/Needs:

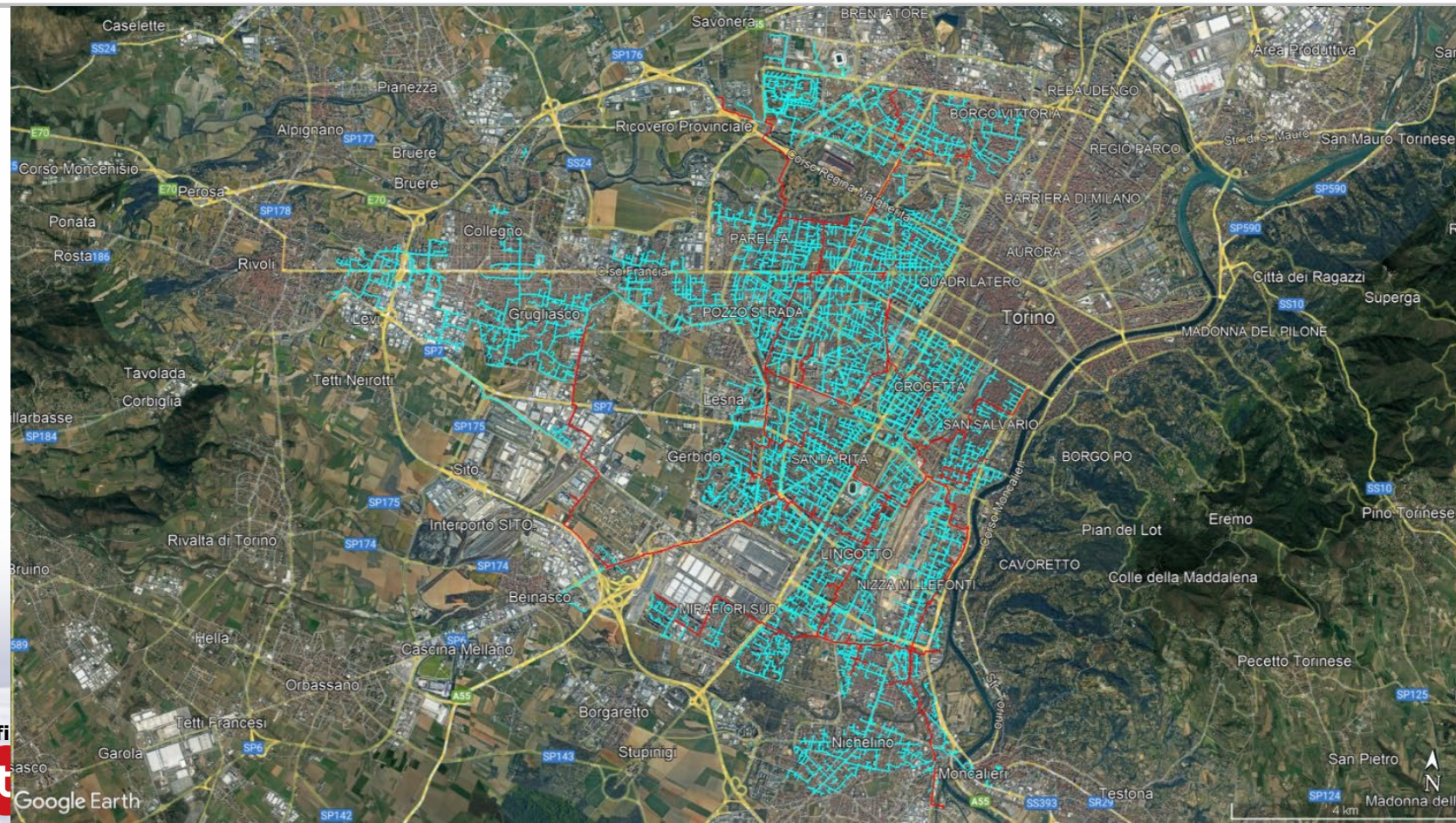
Multi-utility companies offer services to improve energy efficiency in large urban centers, including building district heating.

The distribution network for heating fluids spans hundreds of kilometers and is subject to losses and leaks.











Technological Solution:

Night aerial thermography with high-end MWIR camera allows to obtain accurate maps with a GSD of approximately 15 cm and positional accuracy under one meter, during hours with minimal interference from vehicles on the road.

The map (orthophoto) can be overlaid onto the distribution network to detect thermal "spots" that indicate a network leak.

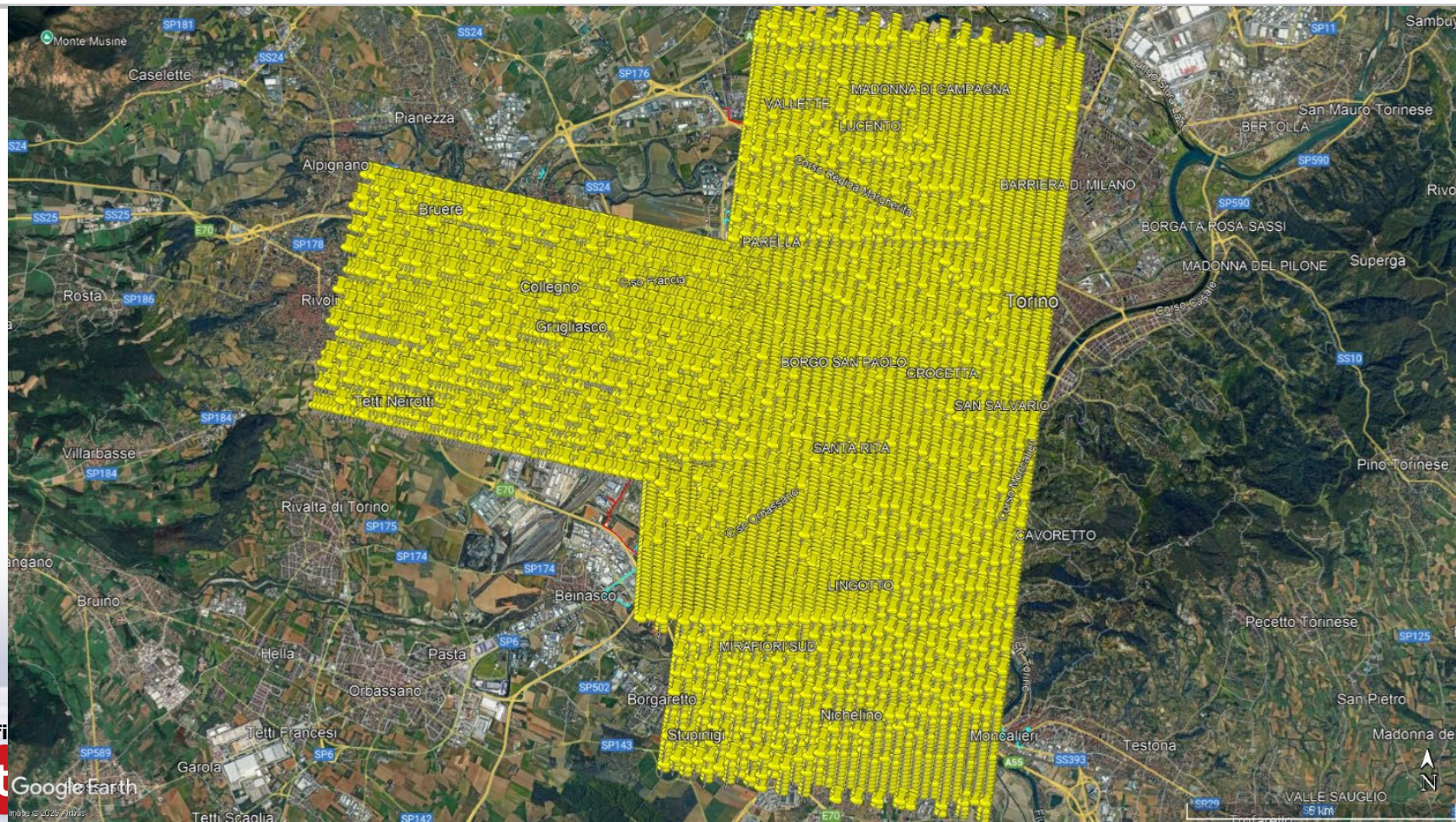


Official Partner

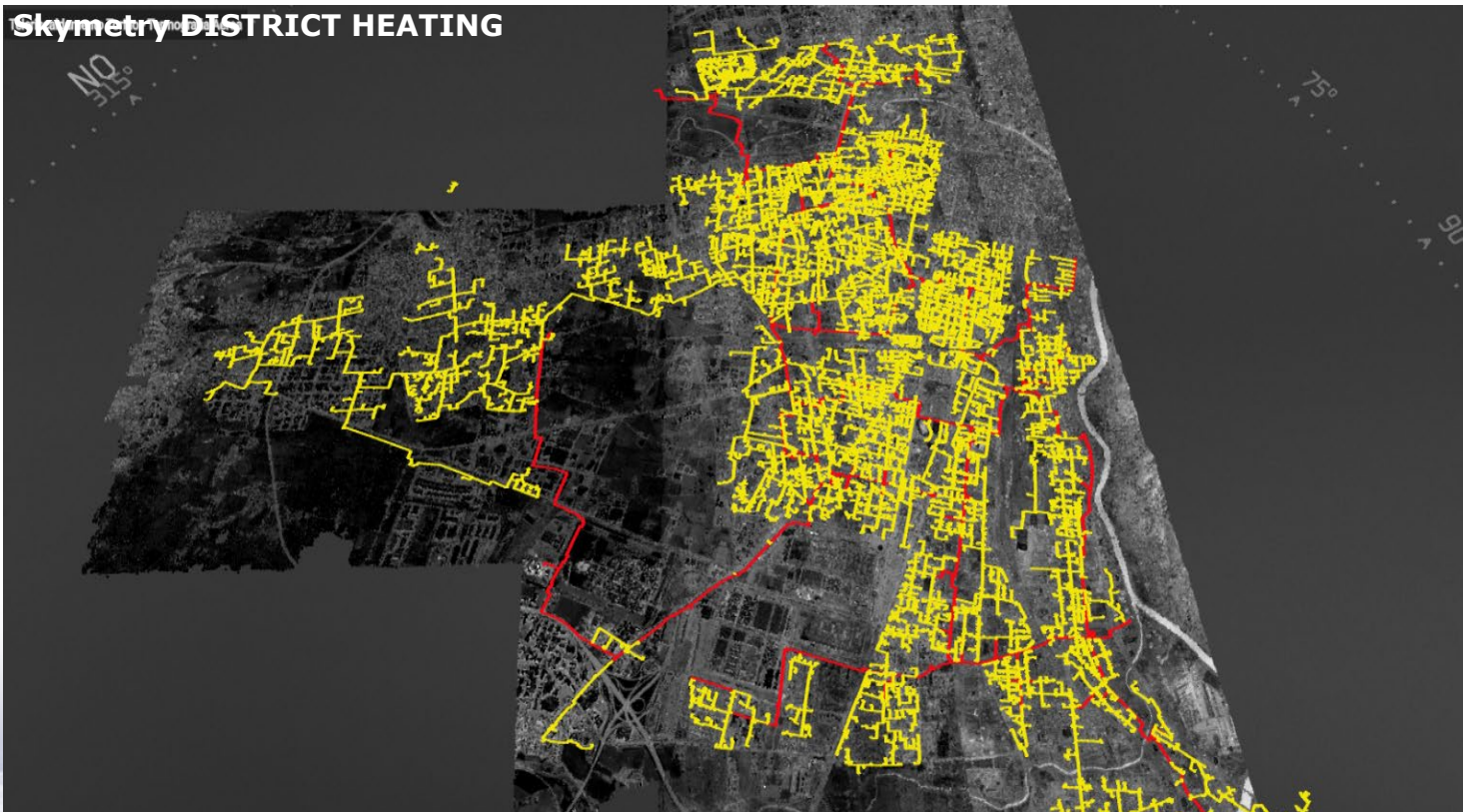


SEEING IS
BELIEVING





Skymetry DISTRICT HEATING



Official Partner

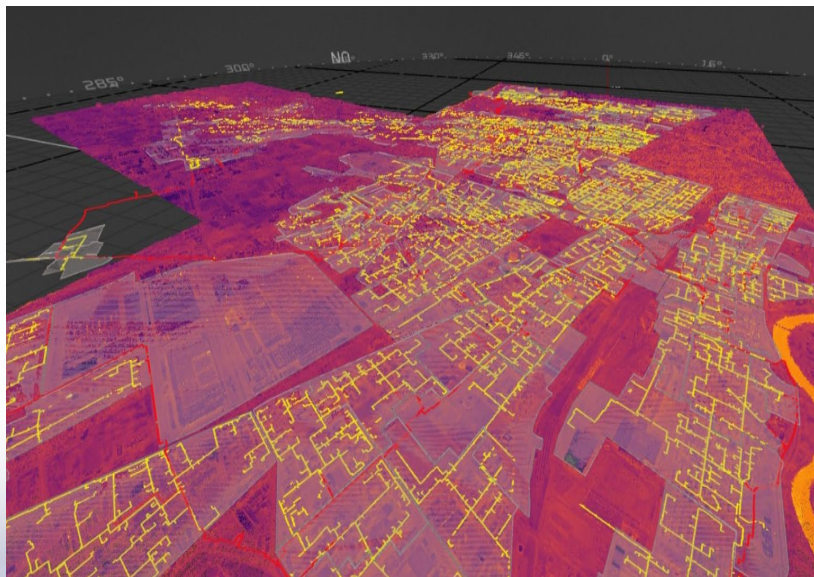


SEEING IS
BELIEVING



The application of thermal imagery in urban landscapes is highly effective when researching district heating losses.

During the winter months, the thermal response of the environment enables to use InfraRed technology to detect potential hotspots.



Main customers:

IREN/A2A/HERA Group

Target area:

District Heating Management

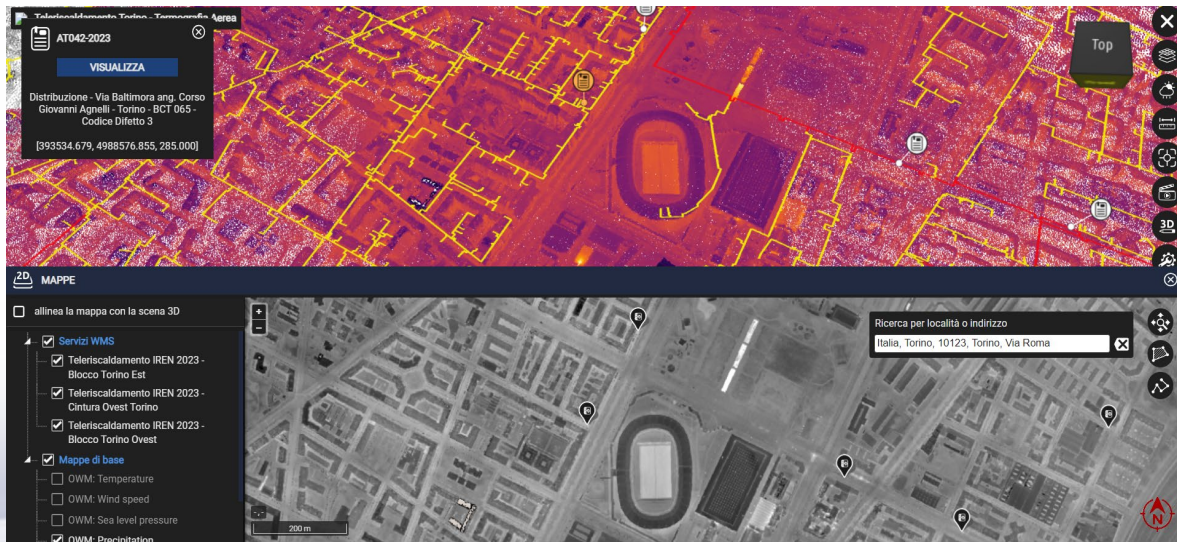
Main Goal:

Heat Leakage detection

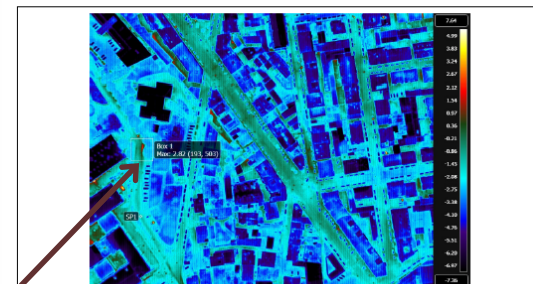
Solution:

Aerial Night-Time Thermographic Mapping

As aerial acquisitions are carried out over the night time, in IFR flight conditions, when the thermal difference is maximized, it is possible to apply analytics and Machine Learning algorithms properly trained to generate reports and classify anomalies fixing criticality thresholds. The classes will then guide interventions based on the severity of the damage recorded.



	Cliente: IREN S.p.A. - Sede di Torino Località: Torino	Data Ispezione: 12/12/2022
--	---	-----------------------------------



ANALISI	RETE TELERISCALDAMENTO
Emissività: 0.95 Temperatura apparente riflessa: -40.0 °C Box 1 Temperatura massima: 2.8 °C Sp1 Cursore Temperatura: -1.4 °C Dt1 (Bx1 Max - Sp1): 4.2 °C	RETE di DISTRIBUZIONE OM 150 Indirizzo: Moncalieri - Via Pininfarina - Curva Sala Congressi G. Rota dell'ITIS Pininfarina Coordinate GPS: 45.01405014, 7.66231516 Codice difetto: AT012-2023 Linea Confine BCT: 007 Sovratemperatura: 4 °C Classe difetto: 4
COMMENTI	IMMAGINE DEL VISIBILE
Figura 16 - Via Pininfarina Curva Sala Congressi Sala G. Rota dell'ITIS Pininfarina - Moncalieri [Cod. AT012-2023] In corrispondenza di Box 1 si rileva una mappa termica lievemente anomala compatibile con una potenziale perdita di isolamento termico della tubazione di rete. I livelli termici appaiono tuttavia poco rilevanti. Tenere monitorato con ispezioni periodiche. Data: 12/12/2022 Nome file: IR_1570.jpg Immagine Ora: 03:24:03	

Classe 1	10°C	< AT	> 35°C	Verifica urgente
Classe 2	5°C	< AT	35°C	Verifica da programmare
Classe 3	5°C	< AT	10°C	Verifica differibile
Classe 4	< 5°C	AT		Non necessita verifica, da rivalutare nelle prossime ispezioni termografiche

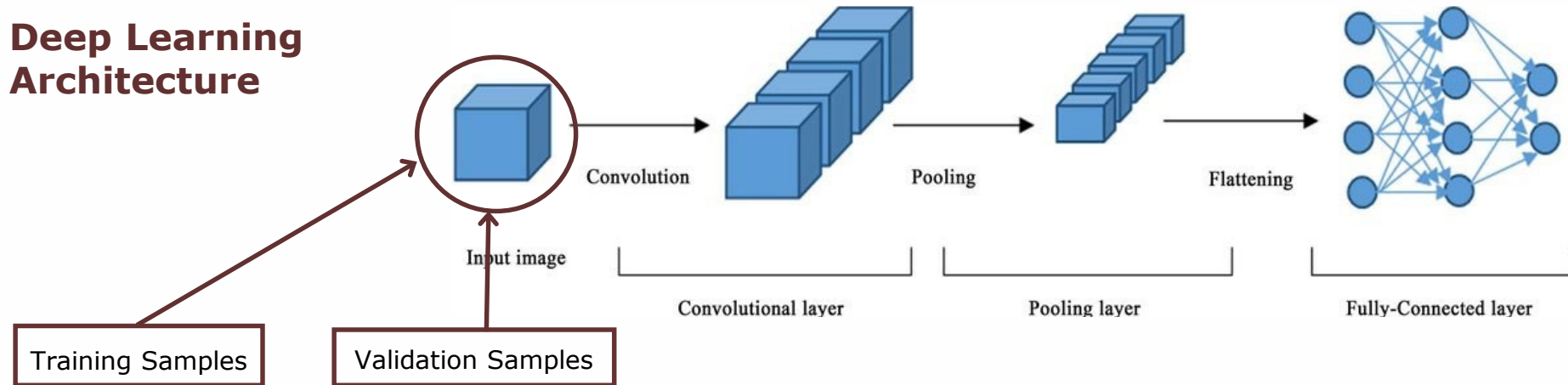
Official Partner



SEEING IS BELIEVING



Deep Learning Architecture



Training Samples

Validation Samples

Ratio: Training /
Validation / Test Split

Number of training
samples

Raster bands

Class balance

Additional
information:
Texture, Shape, Edge,
Statistics, Color

Image resolution

Geometry / Spatial
context

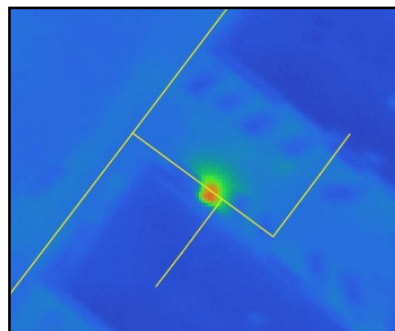
Background
(True negative)

Official Partner

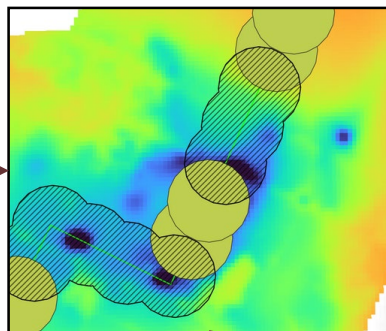


SEEING IS
BELIEVING

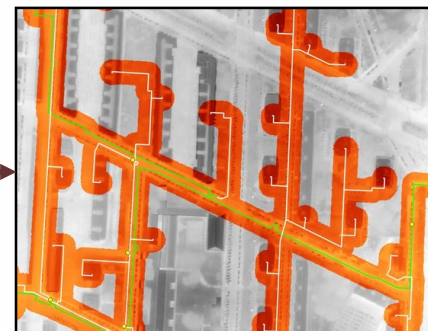




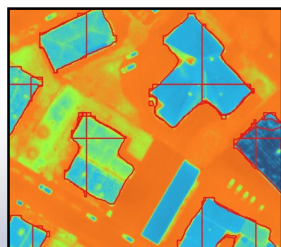
Pipelines



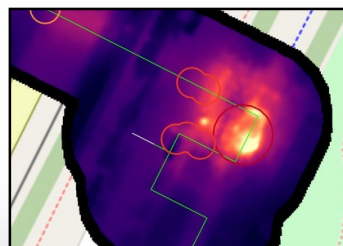
Buffers



Network extractions



False positive



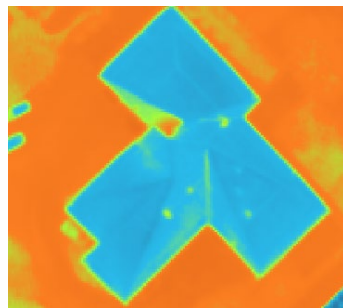
True positive

_mean	_median	_stdev	_min
14.3627601097...	14.3721814155...	0.09334762532...	14.0638322830...
13.1205592435...	13.1385641098...	0.10977693563...	12.7375421524...
9.91461795254...	9.92598533630...	0.11642133651...	9.50889968872...
11.9294944366...	11.9538669586...	0.12639188045...	11.4775037765...
12.9091758881...	12.9207887649...	0.10756770745...	12.6254482269...

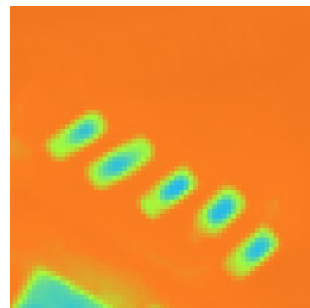
Zonal statistics



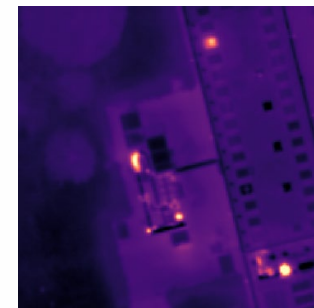
False positive typologies



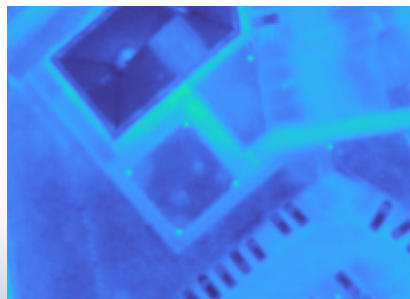
Buildings



Cars



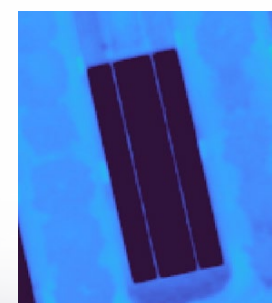
Industries



Street lamps



Spillover effect



Cold objects

False positive prediction DL

Training samples:

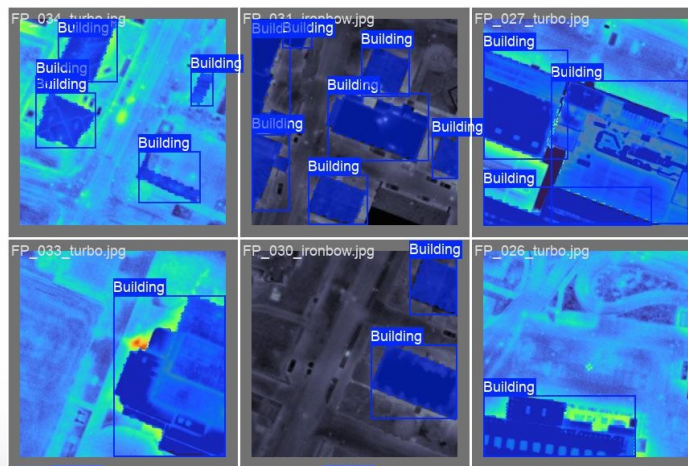
>1000

Deep learning architecture:

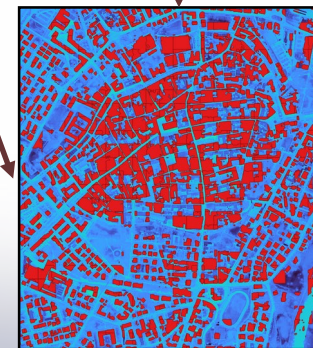
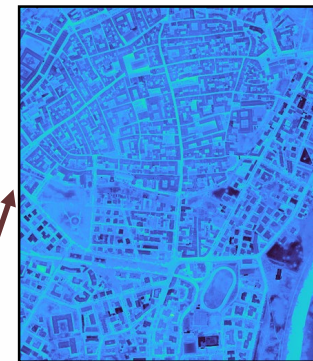
YOLOV8

Bands:

1 (Thermal MWIR)



Raster



YOLOV8
Output

Anomaly prediction DL

Training samples:

>500 (*per class*)

Deep learning architecture:

DeepLabV3

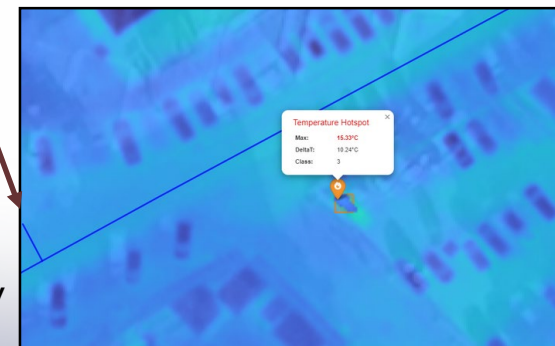
Bands:

1 (Thermal MWIR)

Class 1 anomaly

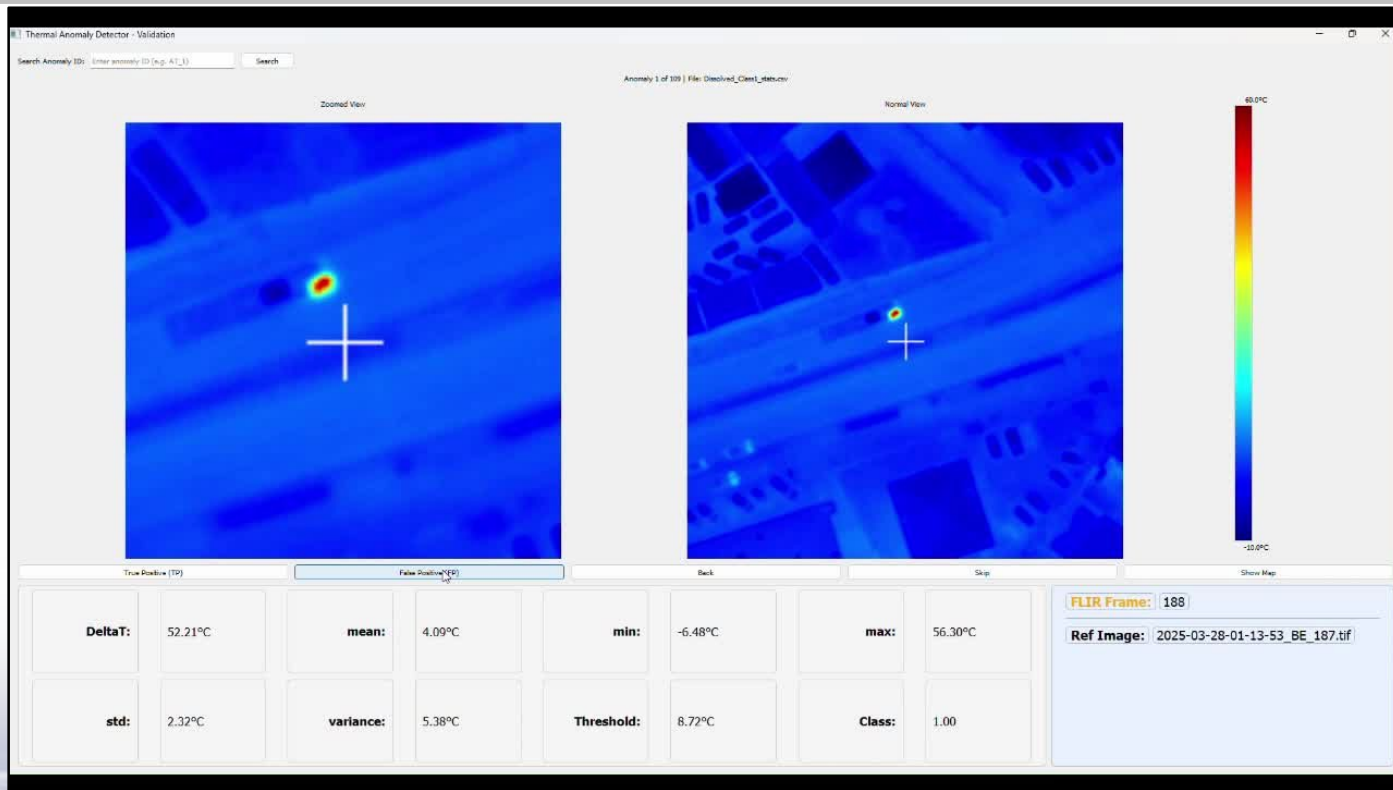


Class 3 anomaly



Anomaly detector V03

by



Official Partner



SEEING IS
BELIEVING





Email: Luca.delnero@darkwavethermo.com
Website: www.darkwavethermo.com